

Providence R. I.  
This plat accompanies  
our report of this date.

PROVIDENCE, R. I.  
CITY ENGINEER'S OFFICE  
STREET LINE DEPT.

Sept. 6, 1888

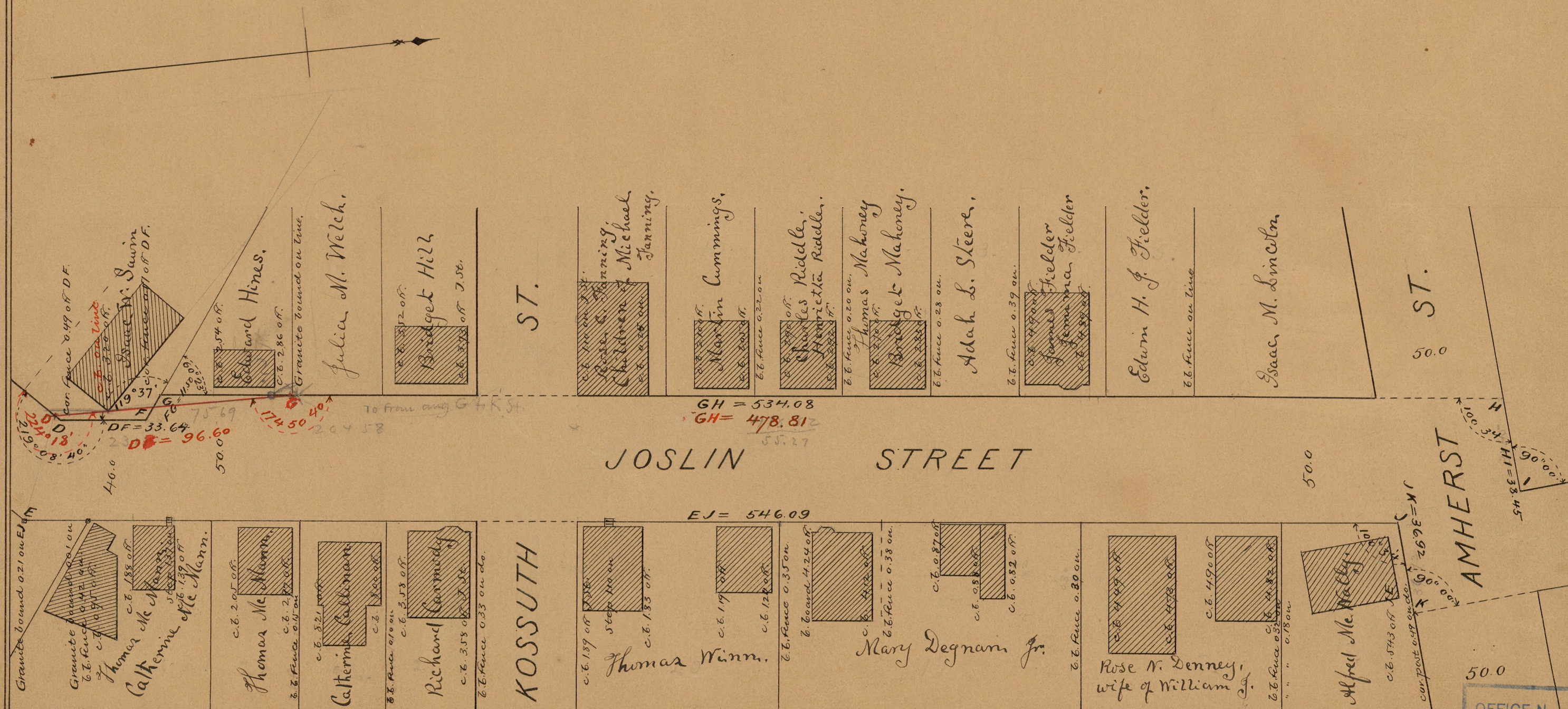
014251

# PLAT OF JOSLIN STREET FROM MANTON AVE. TO ATWELLS AVE.

IN THREE SHEETS

SCALE 40 FEET PER INCH

*Red line correct.*



OFFICE No.	9766
DRAWER	83
SHEET	B-16